

# NEWSLETTER



Baikoen Bonsai Kenkyukai

November 15, 2018

Harry Harrington

Carving a California Juniper

Tree donated by Dick Ryerson

Shirley & Charlene Quan's home

If you need directions, please email

Please bring something for the raffle

## Officers

Ken Teh

President

(626) 822-0077

Lindsay Shiba

Vice President,

Show chairman

(909) 473-0099

Ken Teh

Interim Treasurer

Mary Morrissey

Board Member

(626) 705-3273

Joe Galgoul

Program Chair

(626) 429-0325

Greg Kathol

Benefit Drawing and

Membership

[baikoenmembership@gmail.com](mailto:baikoenmembership@gmail.com)

Johan Garcia

Refreshment Chair

[oladnas1010@gmail.com](mailto:oladnas1010@gmail.com)

Shirley Quan

Secretary/Newsletter

[shirley\\_quan@sbcglobal.net](mailto:shirley_quan@sbcglobal.net)

Tom Lau

Webmaster

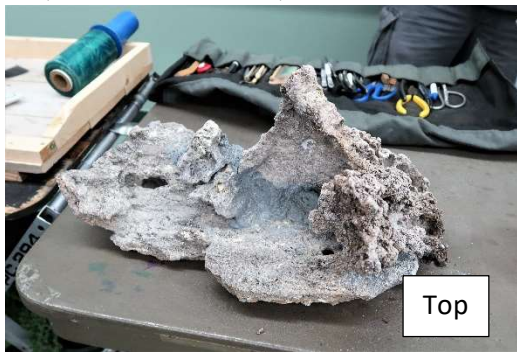
[halfclueless@yahoo.com](mailto:halfclueless@yahoo.com)

## Mel Ikeda ~ Juniper on a Rock

<https://www.facebook.com/baikoenbonsai/videos/243992632946073/>

Mel Ikeda is an old bonsai friend. Down to earth with a lot of common sense, humor and a lot of tradition. He runs the Mel Ikeda Tomodachi at the GSBF Convention with his friends, a styling extravaganza that is an great source of revenue for Golden State Bonsai Federation (plants are styled by his friends and the plants are auctioned off) and he leads Nan Pu Kai bonsai show (a club founded by John Naka) as part of Nisei Week in Little Tokyo every August. He is most famous for styling a raft bonsai.

This time he did something different. He made a rock planter by cementing three rocks together. Here are pictures of the top and bottom.



Bottom, the rocks were placed so that the plant would have good drainage. See the three feet, that the stones are resting on above.



He brought in 4 or 5 junipers that he got from a nursery, not trained. Mel wanted input from club members on which single plant would they use for the stone planting. You can see Ken, Michael, Greg, Johann and Joe discussing the various merits of each plant.





Once the plant was selected, Mel asked Joe and Kevin to wire every branch of the plant (left). Meanwhile Ed Mervine brought in his raffle prize winning from June 2016 for Mel to work on (see below).

You can see how much the plant has grown in two years. Ed is asking Mel how to trim and which plant is primary and how to shape the apex. The tree that has the thickest trunk will be the dominant plant.







But the plant needs to be trimmed first so you can see the shape. No pinching, only trimming.



And all the time Joe and Kevin were working on wiring...







The raft after the trim is finished.



To return to the original project, juniper in a rock planting, Mel sprays water into the rock and starts to add muck, in the trowel (a mixture of soil and sphagnum moss) in the rock cavity. The recipe for muck varies. Some use worm casting with sphagnum moss, others use soil (usually some kind of clay or adobe mixed with shredded sphagnum moss. A shortcut to shred

the moss is to rub through a sieve instead of trying to cut individual pieces of the moss.





Plant is positioned, and the soil/muck is worked in with a stick, then the anchoring wires in the stone are



worked in and positioned over the branches.







This is the apex. It needs to be wired up and the branch directly below it needs to be wired down and out.







Kevin  
applied moss  
to the  
finished  
arrangement.



And Gustavo  
won the raffle!



## Harry Harrington – November Demonstrator

As part of the California Bonsai Society Visiting Artist program, we are fortunate to have Harry Harrington as our demonstrator in November. He is the author of three books and has a web site [www.bonsai4me.com](http://www.bonsai4me.com), author of 'Species Guides' in 2001, the first comprehensive study of plant species suitable for Bonsai (available online). You should check out his web site, it is a treasure of information about plants and bonsai.

## Cookie / Snack sign-up for the July meeting.

Refreshments by Ken Teh, Gustavo Duran, and Alex Hall. Thank you for signing up.

## Announcements

We are sorry to announce that Sarah Gyer has passed away.

Baikoen November meeting will be held at Shirley and Charlene house. If you need directions, please email Shirley, [shirley\\_quan@sbcglobal.net](mailto:shirley_quan@sbcglobal.net) (the return address on this newsletter is not where the meeting will be held). The Arboretum needs the space for their activities, so we had to find other space for our meeting.

**November 20, 2018. Field trip to Ed Clark, Round Valley Nursery, 24022 Ave 230, Lindsay, CA 93247.** Tom Lau will lead a caravan north to Ed Clark's Round Valley Nursery in Lindsay, Ca. Please contact Tom ([halfclueless@yahoo.com](mailto:halfclueless@yahoo.com)) if you want to go. He will try to arrange carpooling, and central points to meet. Ed Clark is a fascinating person to talk with and his knowledge about plant care and growth is legendary. You'll find plants, including pre-bonsai, that you'll never see anywhere else. And going with a group is the best way to go, finding the nursery is a challenge.

**Christmas party, Saturday December 1, 2019** at Lindsay & Debbie's home. Please see flyer. Change in date from meeting announcement.

**December 1, 2018 Clovis, California, Fresno Bonsai Society and GSBF Clark Bonsai Collection:** 10th Annual Bonsai Yard Sale at the Clovis Botanical Garden, 945 North Clovis Avenue, from 8 AM until 2 PM. Free parking and bargains galore on bonsai, pre-bonsai, pots, books, stands, accent plants and all things bonsai. Everyone one is welcome to buy, sell or trade. Come early for the best selection. Contact Dave Soho for more information at 530 722-7132 or Mike Saul at [tinytreeme@sbcglobal.net](mailto:tinytreeme@sbcglobal.net).

**Saturday & Sunday January 19 and 20, 2019, Baikoen Bonsai Kenkyukai, Winter Silhouette 55<sup>th</sup> Annual Exhibition**, founded by Frank Fusaji Nagata, Ayres Hall of Environmental Education, Arboretum of Los Angeles County. 301 North Baldwin Avenue, Arcadia, CA 91007. Demonstrations, sales area, club and vendor plants, pots, tools and more. Show hours are from 10am to



4:30pm with a demonstration at 1pm on both days. The reception is open to friends of Baikoen Bonsai Kenkyukai, when the Nagata-Komai Award will be presented to Ted Matson, followed by a giant raffle/auction. For more information contact Lindsay Shiba, shibalindsay@gmail.com, or Ken Teh, kenwteh6@gmail.com or visit our website, [www.baikoenbonsai.com](http://www.baikoenbonsai.com).

**February 16 – 17, 2019 Oakland, California, GSBF Bonsai Garden at Lake Merritt:** The Annual Mammoth Auction and Sale Fundraiser will be held at the Lakeside Park Garden Center, 666 Bellevue Ave., Lake Merritt. Saturday: Auction preview at Noon with Auction starting at 1 p.m.. Sunday: Vendor Sales start at 9 a.m.; Plant Sales start at 10 a.m.; Demonstration start at 1 p.m. Everyone is encouraged to submit their bonsai and bonsai related items for consideration to be included in the Mammoth Auction at the earliest date possible. "Private collections to be featured." The Bonsai Garden at Lake Merritt will be open that weekend 10 a.m. to 3 p.m. on Saturday, and Noon to 3 p.m. on Sunday. Please find time to visit the Bonsai Garden and observe the many installments under the Garden Revitalization Opportunity (GRO) Project. For more information or to sell bonsai, email [bonsailakemerritt@gmail.com](mailto:bonsailakemerritt@gmail.com) and visit <http://BonsaiLakeMerritt.com>.

**Feb. 23 – 24, 2019 San Marino, California, Bonsai-A-Thon XXIII** at the Huntington Library and Botanical Gardens, 1151 Oxford Road. This is the annual fundraiser for the GSBF Collection at The Huntington. Event admission is free with Bonsai-A-Thon "early bird" registration between 8 AM - 9 AM. Event hours are 8 AM - 4:30 PM both days. Pancake breakfast, demonstrations, lunch, bonsai exhibits, large sales area, raffle and auction. For more information visit The GSBF Collection at The Huntington.

#### 2018 Demonstrator List

November 15, 2018	Harry Harrington from the UK
December 2018	No meeting/ Happy Holidays
January 19 & 20, 2019	Winter Silhouette Show

#### 2019 Demonstrator List

January 17	Lindsay Shiba, workshop
February 21	CBS Guest Artist
March 21	Bill Baddeley, carving
April 18	Tom Nuccio, Nuccio's Nursery
May 16	CBS Guest Artist
June 20	Dennis Makishima, Black pine
July 18	CBS Guest Artist
August	no meeting
September 19	Jason Chan
October 17	Tom Vuong, Bending
November 21	CBS Guest Artist
December 2019	No meeting/ Happy Holidays



Shirley Quan  
Baikoen Bonsai Kenyukai  
5379 Somerset St  
Los Angeles, CA 90032